



Instructions: How to send your CareLink data with DIABASS SecureSend

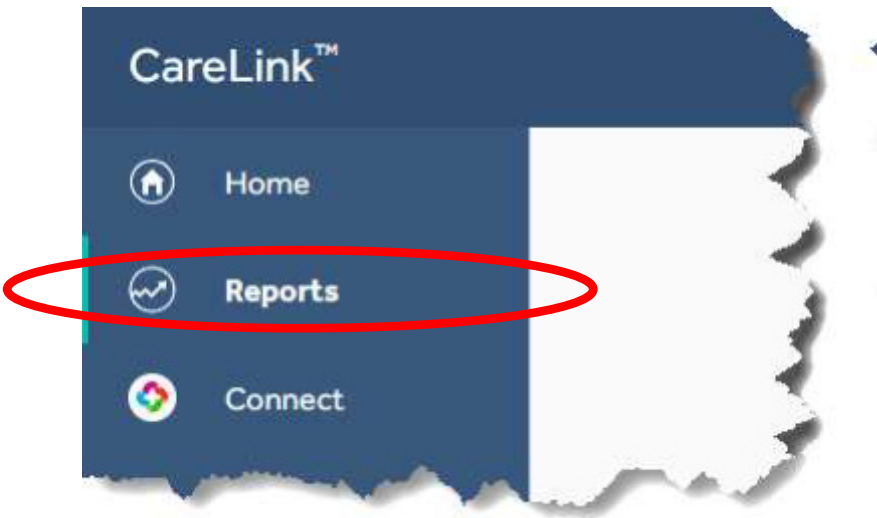
These instructions describe how to send data from Medtronic CareLink to your doctor or clinic using DIABASS SecureSend. It is easy and does not take too much time:

First, you need to export your data from the CareLink Cloud. In a second step, you can send it highly securely via DIABASS SecureSend to your diabetes team.

Export data from CareLink

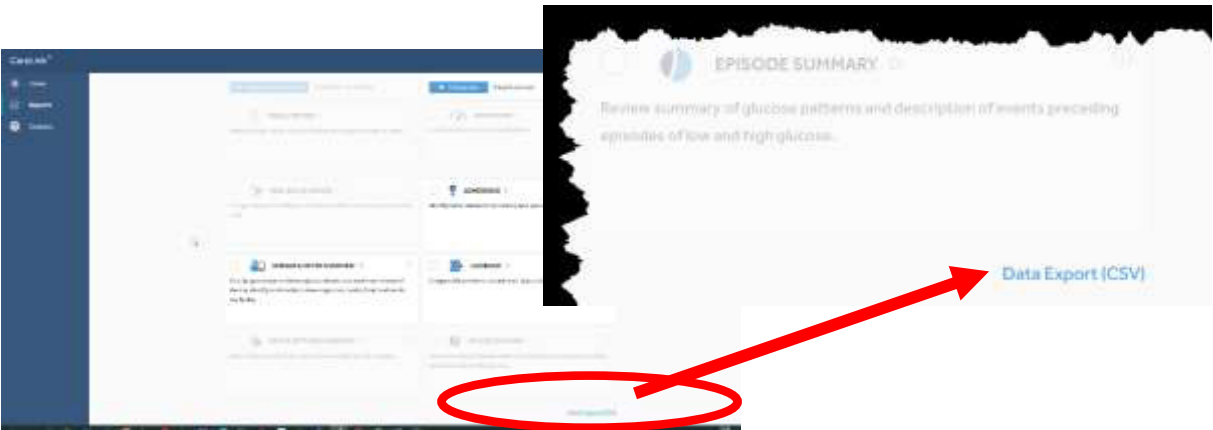
Step 1

Log into your Carelink account and choose menu **REPORTS**



Step 2

Click on "**DATA EXPORT (CSV)**", this command is located at the bottom right of the screen.



A raw data file in CSV format will now be generated. Please save this file in a folder on your hard disk.



Send data to your doctor/clinic

For sending data to your diabetes team, you can either use the diabetes diary software **DIABASS6** or the **DIABASS SecureSend Uploader**. **DIABASS6** offers numerous evaluations and allows convenient documentation of all relevant diabetes data, for example medication, insulin and nutrition.

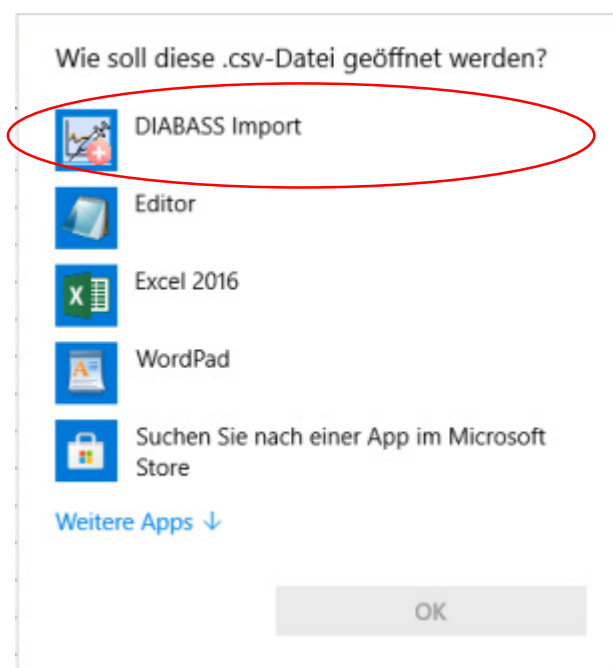
Both software are free of charge, please follow the instructions on the info sheet you received from your practice/clinic.

Step 1

If you are using DIABASS6:

Double-click on the CSV file downloaded as above.

A dialog appears and you can select how to open this file.



Select **DIABASS IMPORT**. The data will then be automatically transferred to your diary.



Instructions: How to send your CareLink data with DIABASS SecureSend

Step 2

If you are using DIABASS6:



Click on the **SEND** button, this is located at the top of the screen.

Then choose **SEND MY VALUES**.

If you are using the DIABASS SecureSend Uploader:



Start *DIABASS SecureSend* by clicking the icon on your desktop.



Instructions: How to send your CareLink data with DIABASS SecureSend

Step 3

Please now enter the identification data for data transfer.

These data are printed on the information sheet you received from your practice/clinic.



DIABASS SecureSend

1.0.0.17

Enter ID

Please enter the identification data and then click on Next

Please enter ID of the recipient:

TERA

First Name: First Name: Birthday:

First Name: First Name: Birthday:

First Name: First Name: Birthday:

Please enter your patient code:

A311FD

Please make sure you enter your data correctly, as your data will be encrypted based on this information. The recipient can only decrypt the data if your information is stored there in exactly the same way.

Cancel Next

Please confirm with **NEXT**

Step 4

Please check the recipient information displayed on the screen.

DIABASS SecureSend

1.0.0.17

Receiver Info

Please note any information from the recipient and then click on Next

Musterpraxis
Musterstr. 12345
DE-12345 Musterstadt
<http://www.diabass.com>

Cancel Previous Next

If the recipient is correct, please click **NEXT**.

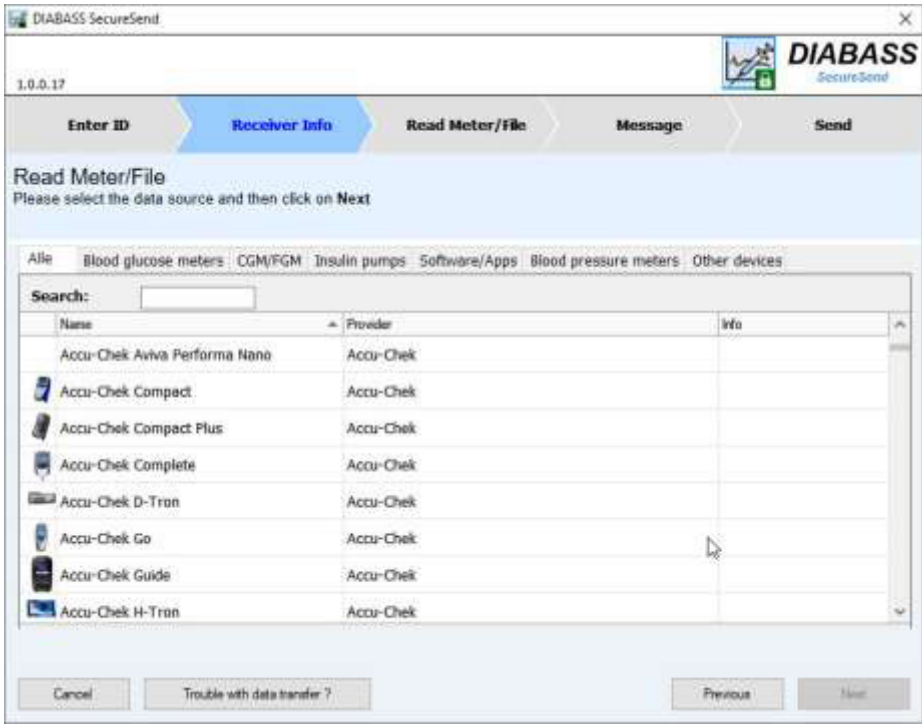


Step 5

If you are using the DIABASS SecureSend Uploader:

Please select *CARELINK* and **DOUBLE CLICK** to open the data transfer wizard.

Select the CSV file you have exported from *Carelink* and follow the instructions on the screen.



Step 5

In the next step, you can enter an (optional) message for the recipient.

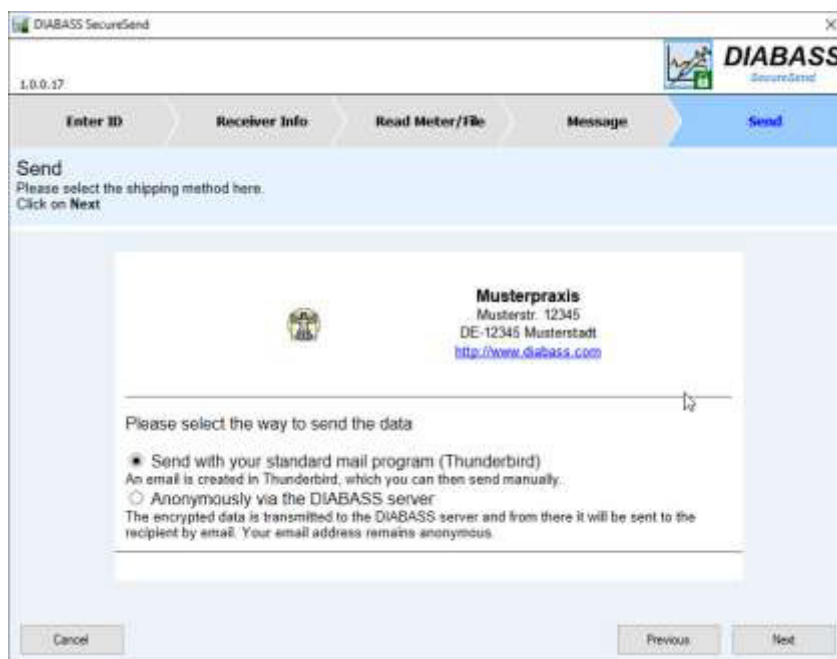
Please click on **NEXT** to proceed



Step 6

After some instants, the data are now highly securely encrypted (AES-256) and ready for transmission.

You can now choose how to send the data.



Sending with you standard mail program:

After clicking on **NEXT**, an e-mail is generated in your standard email client.

Note: you need to send this e-mail manually.

This option is only available if the e-mail client allows the hand-over of file attachments.

Anonymously via the DIABASS server:

After CLICKING on **NEXT**, you will first be asked again for your consent to the data transfer. If you agree, the encrypted data will be transmitted to the DIABASS SecureSend server. From there, your values will be forwarded to the recipient by e-mail, using a neutral sender address. As soon as completed, the data will be deleted from the DIABASS SecureSend server.